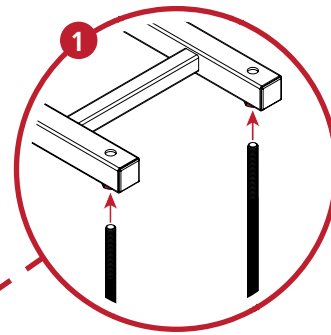
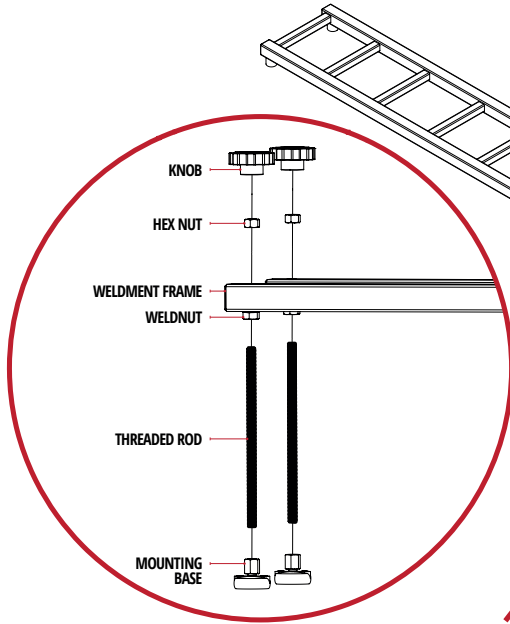
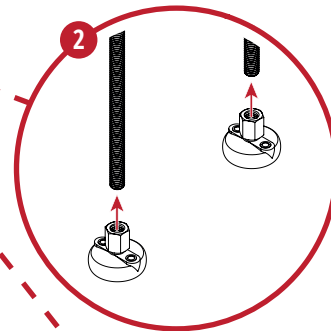


## ASSEMBLY - TABLETOP RAIL SYSTEM

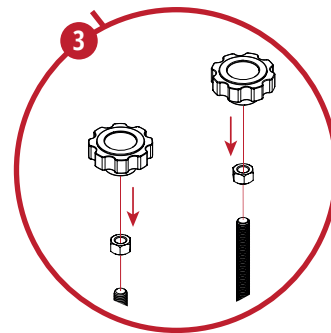
\* For Triple Rail Systems, tumblers with equal end lengths are required for the center trimmer placement. If a tumbler has one longer end, ensure the longer end is facing toward the other machines to prevent gaps.  
\* The following steps apply for both Double Rail Systems and Triple Rail Systems.



**STEP 1**  
**THREADED ROD POSITIONING:**  
FEED THE THREADED ROD INTO THE WELD NUT IN THE DIRECTION AS THE FIGURE ILLUSTRATES.

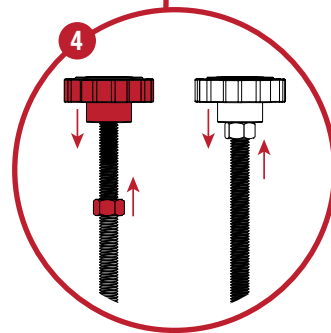
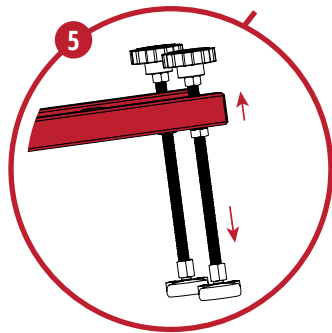


**STEP 2**  
**MOUNTING BASE:**  
CONNECT THE MOUNTING BASE TO THE THREADED ROD, ON THE BOTTOM SIDE OF THE FRAME.



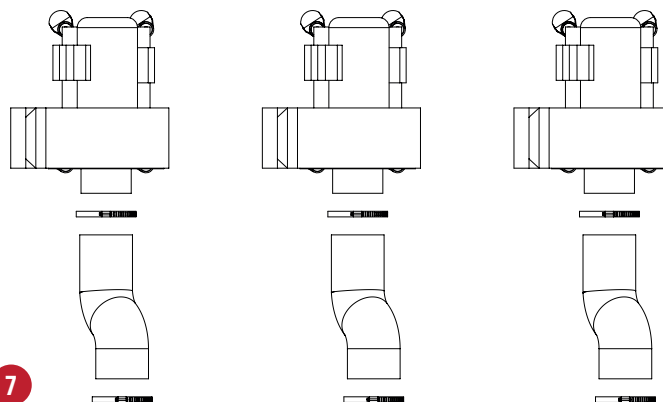
**STEP 3**  
**HEX NUT:**  
THREAD HEX NUT AND KNOB, ON THE OTHER SIDE OF THE THREADED ROD.

**STEP 5**  
**FRAME POSITIONING:**  
TO ADJUST HEIGHT, FEED THREADED ROD THROUGH THE FRAME, MAKING SURE GAP BETWEEN HEX NUT AND RAIL IS ABOUT 1/2".  
KNOB MAY CONFLICT WITH PLASTIC HOPPER IF ABOVE-MENTIONED GAP IS TOO LARGE.

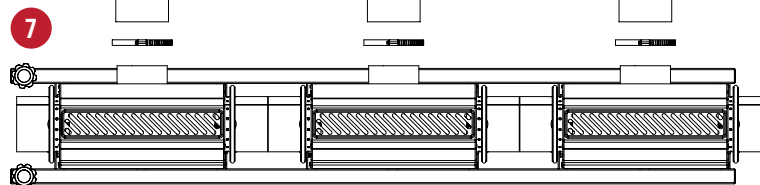


**STEP 4**  
**KNOB PLACEMENT:**  
TIGHTEN KNOB TO THREADED ROD, THEN TIGHTEN HEX NUT TO KNOB, TO LOCK THE POSITION.

**STEP 6**  
**MACHINE POSITIONING:**  
PLACE MACHINES, FRONT-TO-BACK, ONE BY ONE, OVER THE RAIL, MAKING SURE EACH MACHINE SITS CLOSELY TO THE LOWER SIDE CROSS BAR AND KEEPS A DISTANCE OF 1/6" FROM ONE ANOTHER. KEEP THE MACHINES ALIGNMENT CENTERED TO WELDMENT FRAME.



**STEP 7**  
**BLOWER INSTALLATION:**  
USE HOSES AND CLAMPS TO CONNECT BLOWERS TO EACH UNIT.



**LEARN HOW NOW**

